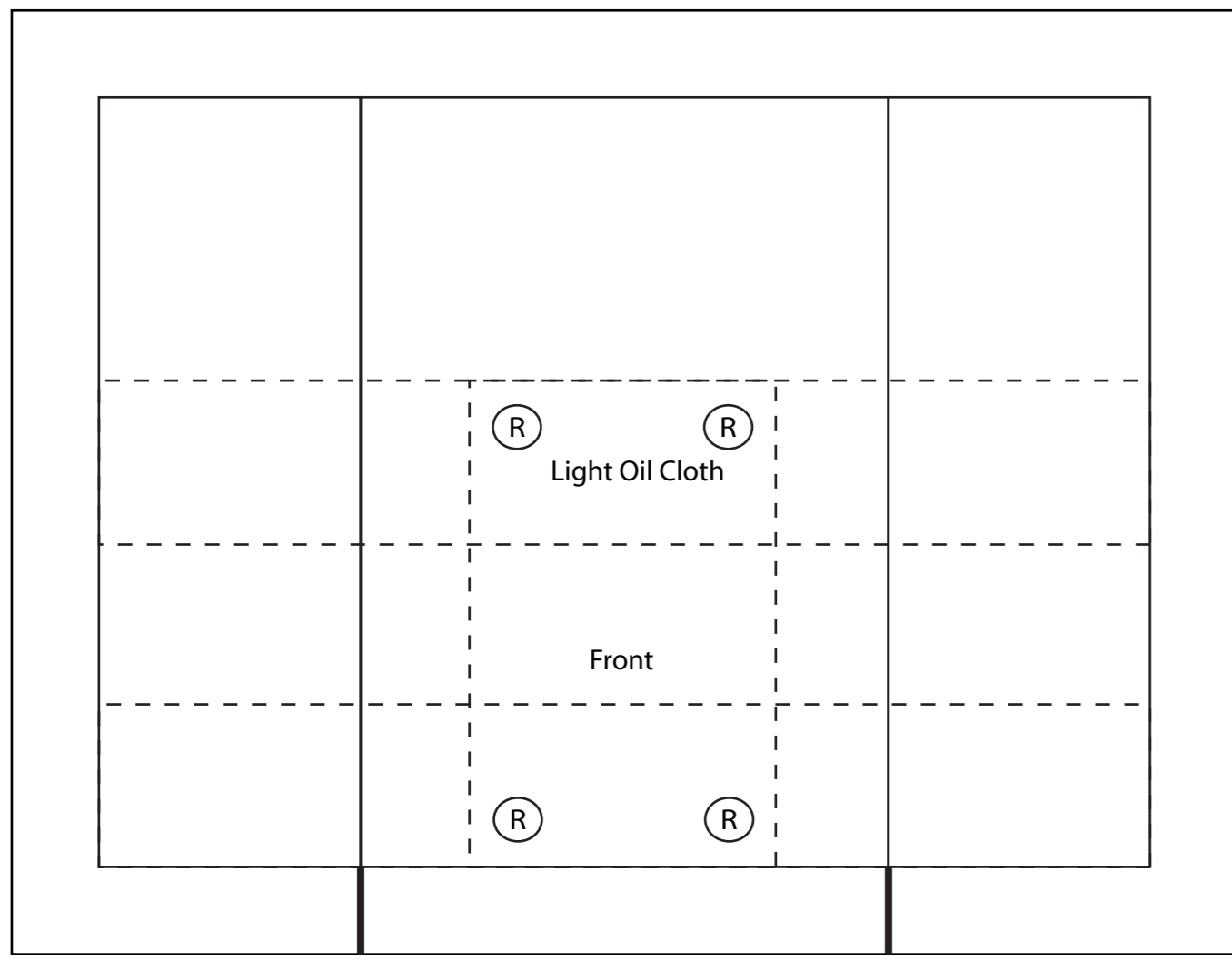


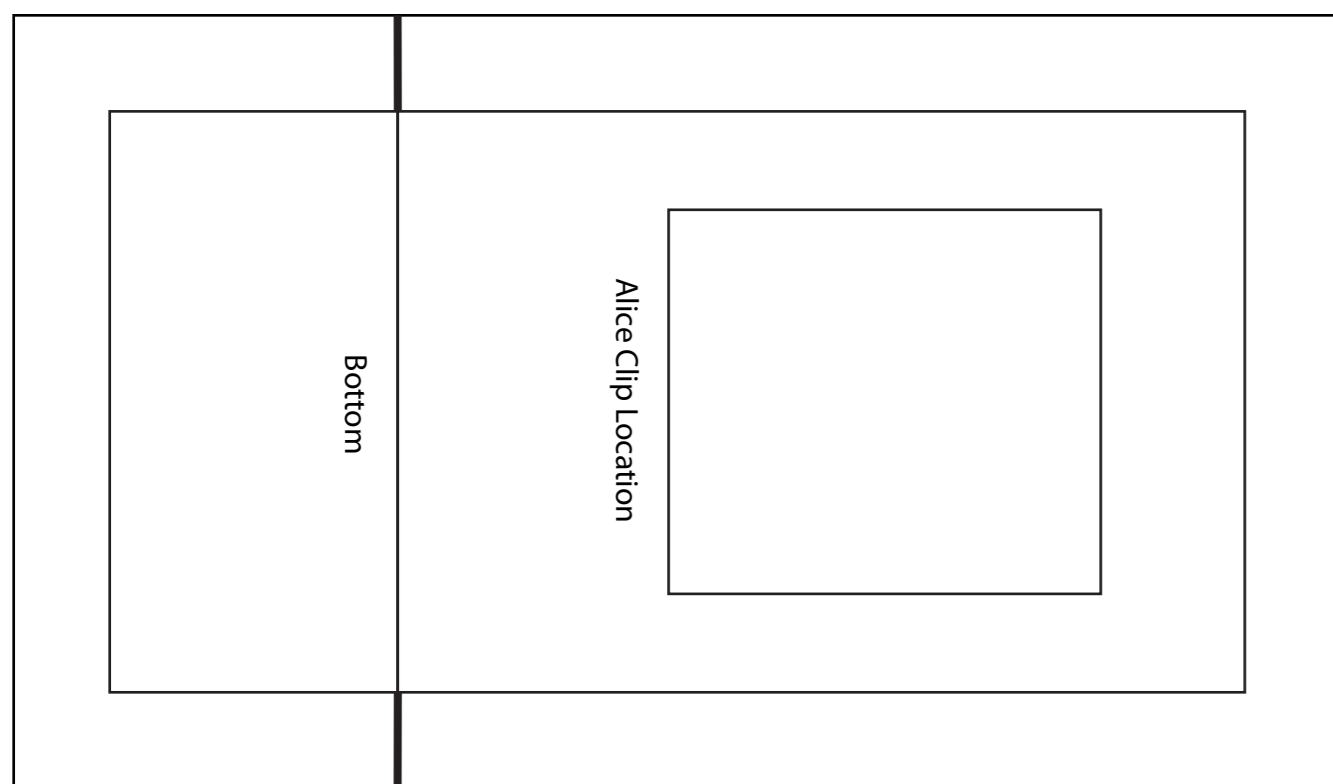
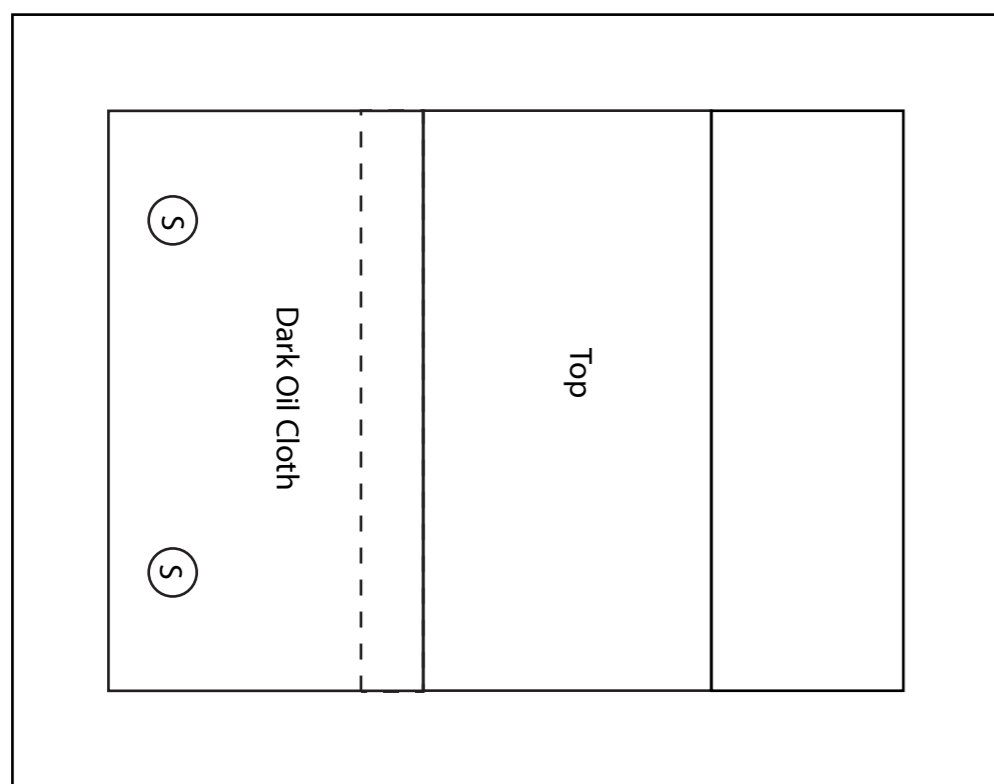
Short Quilted Pouch



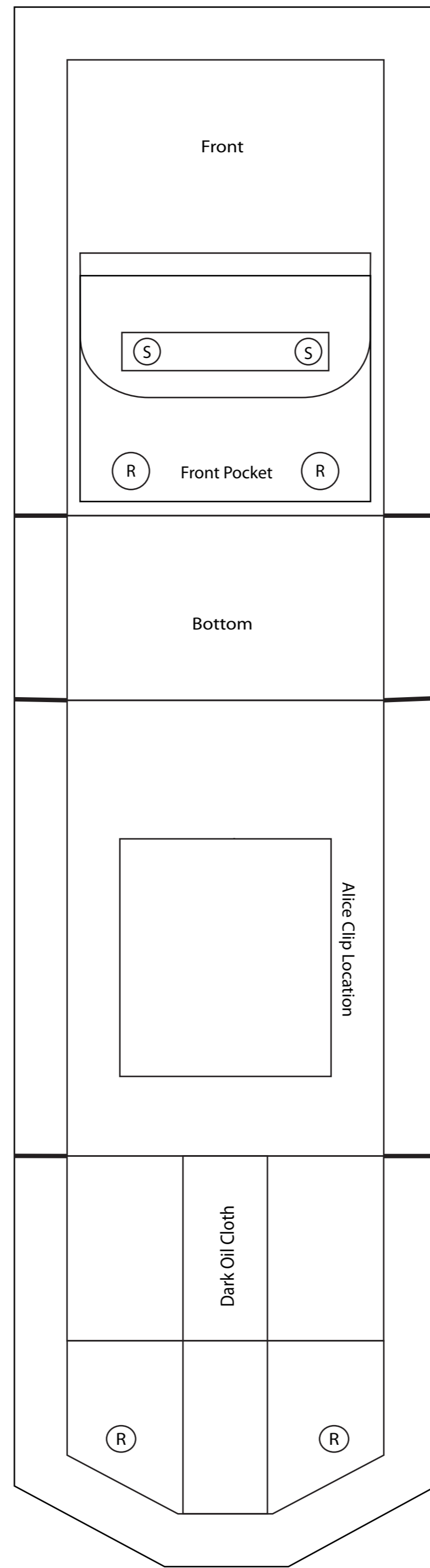
All Pieces:
 Outer line is cut line
 Inner line is seam allowance (sewing line)
 heavy black lines in seam allowance are cut lines.
 dashed lines are quilting lines
 Circle S is Snap Location
 Circle R is Rivet Location

Front & Sides solid piece

Short Quilted Pouch

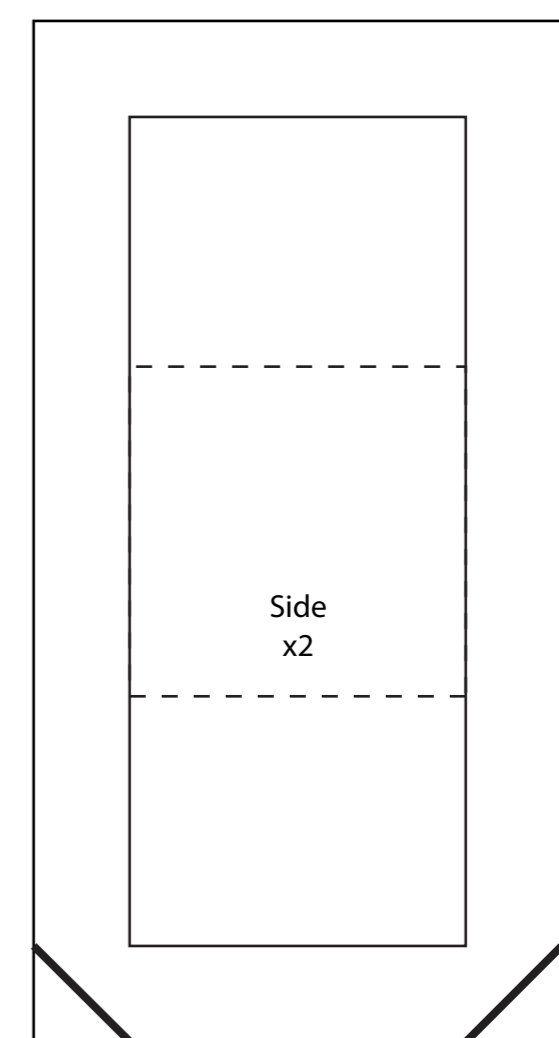
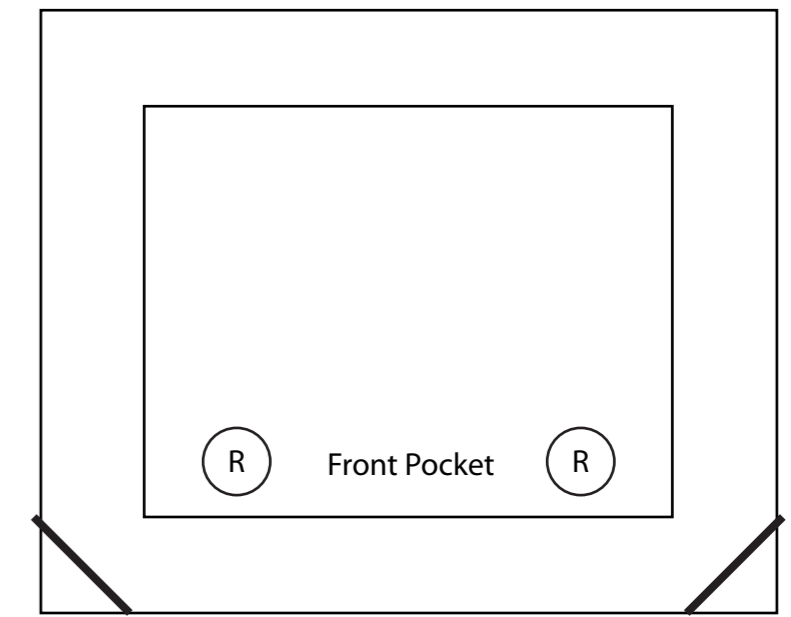
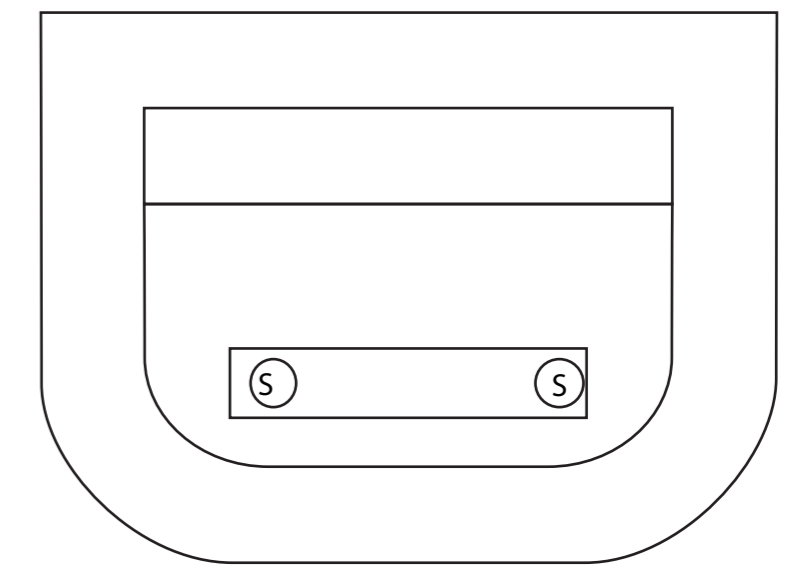


Short Pouch w/Front Pouch



Back, Bottom, Front solid piece

Short Pouch w/Front Pouch



Short Pouch w/Front Pouch